

A modern, multi-story office building with a prominent concrete facade. The building features a large, angular concrete structure in the center with the 'SPAL' logo mounted on it. The rest of the building is white with large glass windows. The sky is clear blue, and there are some green plants and a paved area in the foreground.

SPAL  
PORCELANAS

COMPANY PROFILE  
major highlights | 2017



SPAL  
PORCELANAS

since  
1965





industrial facilities:  
64.000 m<sup>2</sup>



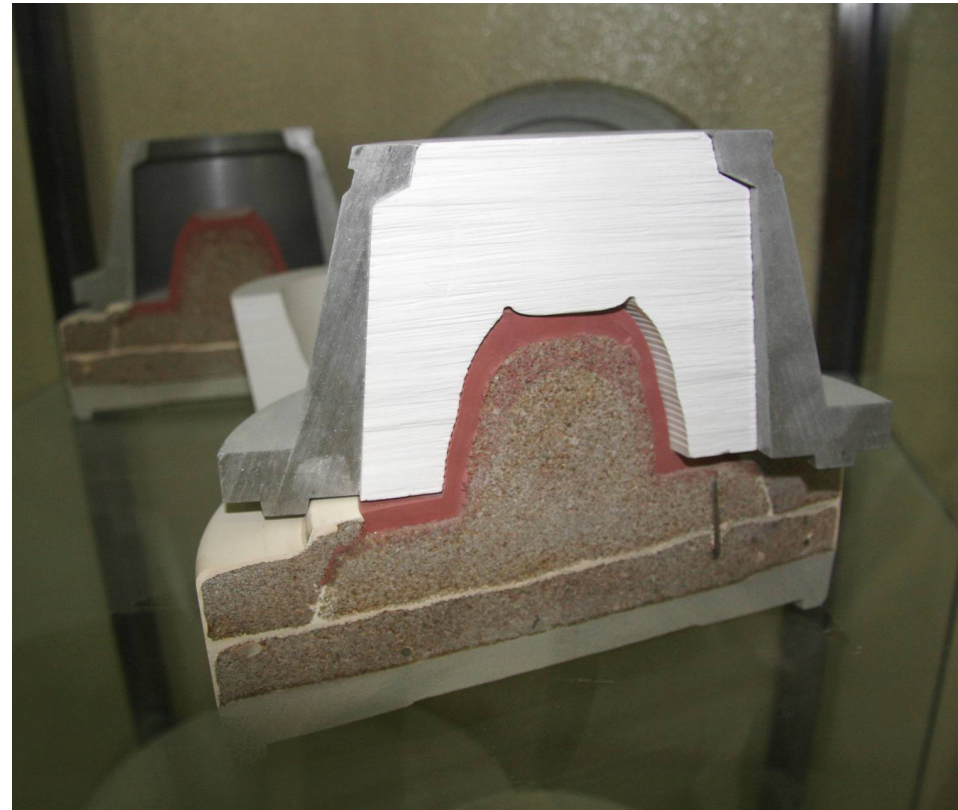
SPAL  
PORCELANAS



# decal production unit



flexibility and higher response level



flexibility and higher response level



# raw materials selection and preparation





advanced technology

SPAL  
PORCELANAS



- Roller machines
- Isostatic pressure
- Pressure casting
- Manual filling system
- Automatic filling system
- Finishing robots
- Automatic glazing
- Manual glazing
- Fast fire kilns



18 million pieces per year







SPAL  
PORCELANAS

470  
co-workers





in-house design studio

SPAL  
PORCELANAS



SPAL STUDIO



environmental policy  
ethics, health & safety



SPAL is certified by Quality Management Systems

SMETA 4-PILLAR CERTIFIED



ethical  
2017 style

key segments



hotel&hospitality

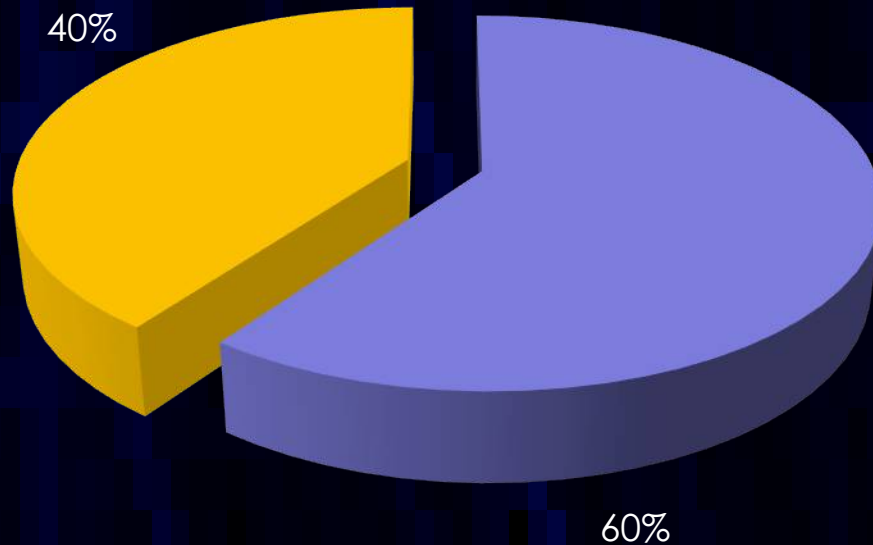


homeware





GLOBAL PRESENCE  
over than 45 countries

# distribution of anual turnover 2016



Portugal  
USA  
Spain  
Italy  
France  
Denmark  
Belgium  
UK  
South Korea  
Germany  
South Africa  
Chile  
Norway  
Switzerland  
Japan  
Colombia  
Saudi Arabia  
Sweden



 External market  
 Domestic market



SPAL  
CERAMAS

Portuguese market:  
· 6 own stores  
· over than 50 multibrand points of sale

proudly creating for  
(US and Canada)

**Crate&Barrel**



**BAMBE CO**  
SUSTAINABLE HOME GOODS

*ARAM*  
MICHAEL ARAM

ANTHROPOLOGIE

**JONATHAN ADLER**

*Neiman Marcus*

RALPH LAUREN  
*Home*



BLUE  
PHEASANT

MIKASA



DEVINE

*HomeGoods*



Anna Weatherley Designs







# Crate&Barrel



Maroquin\* cotton-viscose by Manuel Canovas from Cowtan & Tout; cowtan.com.

Glazed linen by Ralph Lauren Home; ralplahrenhome.com.

Colors porcelain dinnerware by Anna Weatherley; devinecorp.net.

Gold semipr stone by Ippolito

Amazonia wool-blend rug by Martha Stewart Rugs for Safavieh; marthastewart.com/shop.

Lacquered boxes by F Connections; pconnections.us

Geneva\* cotton-linen by Villa Romo; romo.com.

Anderson linen-upholstered wing chair by Williams-Sonoma Home; wshome.com.

Sleeveless organza dress with ruffles by Valentino from spring 2010; netaporter.com.

Saffiano leather bag by Prada; josephstores.com.

Traditional Moroccan leather pouf from Imports from Marrakesh; importsfrommarrakesh.com.

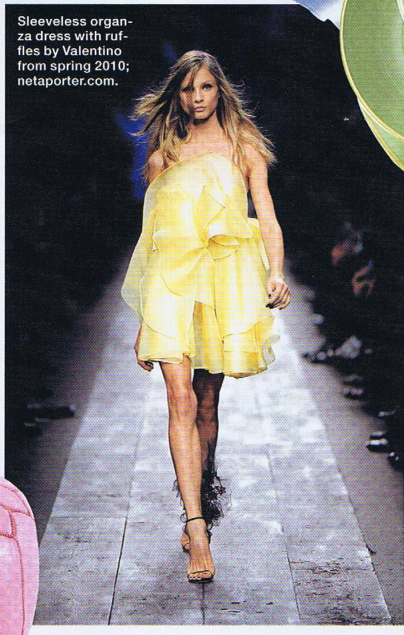
Heirloom\* linen by Isaac Mizrahi for S. Harris; sharris.com.

#24782-40\* cotton-polyester by Kravet; kravet.com.

Modern Light latex paint by Ralph Lauren Paint; ralplahrenpaint.com.

# Pastels

Romantic shades, from pale lilac to buttercup-yellow, are making spring fashions, fabrics, and furnishings look both fresh and fabulous  
Produced by Erin Swift



in trend alert by  
**ELLE DECOR**



 DEVINE

  
Anna Weatherley Designs



RALPH LAUREN  
*Home*





MIKASA



# JONATHAN ADLER





*ARAM*  
MICHAEL ARAM

*Neiman Marcus*





proudly creating for  
(UK)

DEBENHAMS

ANTHROPOLOGIE

AMARA  
LIFE • STYLE • LIVING

HOUSE OF  
FRASER  
SINCE 1849

HEAL'S

**BBC** Worldwide

THE  
CONRAN  
SHOP

**RUDE**<sup>®</sup>



proudly creating for  
(EU)



welcome



Maren's Blog



ROSENDAHL  
COPENHAGEN

LENÔTRE  
PARIS

GENEVIEVE  
LETHU

DUKA *Kitchen life*



Bruno Evrard Création



ZARA HOME

El Corte Inglés





SPAL  
PORCELANAS



  
ROSENDAHL  
COPENHAGEN



proudly creating for  
(South America, Africa, Asia, Australia)

**WOOLWORTHS**

**DAVID  
JONES**

**BED BATH N' TABLE**



**MORGAN & FINCH**  
HOME COLLECTION

**iskia**

*falabella.*

**Liverpool**  
es parte de mi vida.

**M STYLE M.STYLE**

*El Palacio de Hierro*

**oma**

**Rouge  
Ivoire**

L'art de recevoir

# ELEGANCIA Y TENDENCIA /



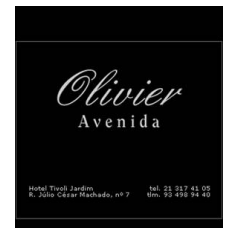
*falabella.*

SPAL  
PORCELANAS

HOTELWARE



proudly creating for



proudly creating for

WW DISTRIBUTORS:





*B*  
BAIRRO ALTO  
HOTEL  
\*\*\*\*\*  
LISBOA









  
DOUBLETREE  
BY HILTON™  
LISBON - FONTANA PARK



 A MEMBER OF  
DESIGN HOTELS

customized solutions developed in-house



**MoMA**  
The Museum of Modern Art

**M**  
Musée  
d'Orsay

**M U S E O**  
**THYSSEN-**  
**BORNEMISZA**

**CASA DAS**  
**HISTÓRIAS**  
**PAULA**  
**REGO**

**CCB**

**SPAL**  
PORCELANAS



# what makes us unique



## DESIGN AND INNOVATION

- First design competition in the Ceramics Industry in Portugal
- In-house design team (SPAL Studio)
- International designers
- Permanent exchange of knowledge with both academic and industrial environments
- National and international recognition (awards, trend cabinets, etc)

## CLIENT FOCUSED ORGANIZATION

- Since 1965
- 51 years know-how
- Long term partnerships with major brands



## INDUSTRIAL FACILITIES

- Portugal-based
- 64.000m<sup>2</sup>
- Decal factory within the group of companies
- Molding department
- Handling and logistics





SPAL  
PORCELANAS

[www.spal.pt](http://www.spal.pt)



Thank You!